

MICROMECHANICAL ACCELEROMETER

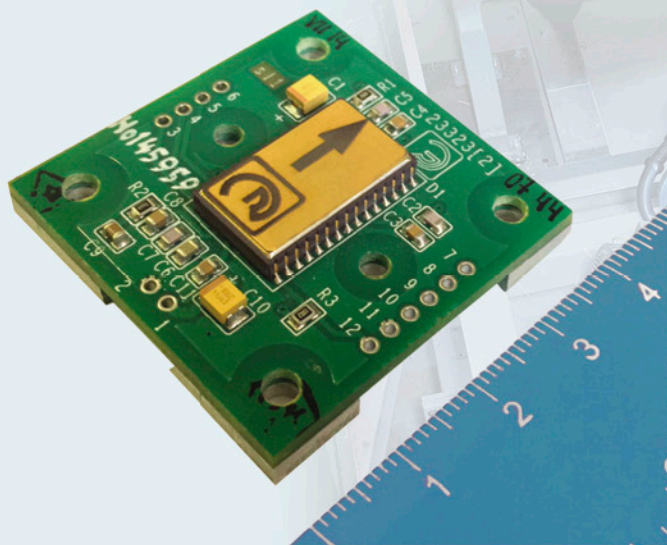
MMA-EP1



IS BASED ON the comb-type structure with lengthwise movement of inertial mass, and capacitive data pick-off; the accelerometer is manufactured using SOI technology.

APPLICATION:

- Automotive industry – to improve traffic safety
- Robotics – to advance manipulator performance
- Medicine – to position surgical instruments
- Navigation and control systems of different mobile objects



SPECIFICATIONS:

Number of axes	1
Measurement range*	15g
Scale factor nonlinearity	<0,3 %
Scale factor instability	<1,5 %
Noise power density	<0,01 g/√Hz
Bandwidth *	100 Hz
Bias stability error (by Allan variance)	<0,001g
Overall dimensions	40,0×40,0×8,2mm
Operating temperature range **	-55... +85 °C
Supply voltage, unipolar	+5 V
Readiness time	<0,5 s
Power consumption	<0,3 W
Output waveform	digital with SPI protocol

* Parameter can be programmatically tuned according to the customer requirements

**Embedded temperature sensor



Concern CSRI Elektropribor, JSC
State Research Center of the Russian Federation

30, Malaya Posadskaya St., Saint Petersburg, 197046, Russia
tel. (812) 499 81 81, 499 83 01. fax (812) 232 33 76
www.elektropribor.spb.ru, e-mail: marketing@epribor.ru
© CONCERN CSRI ELEKTROPRIBOR, JSC, 2017